

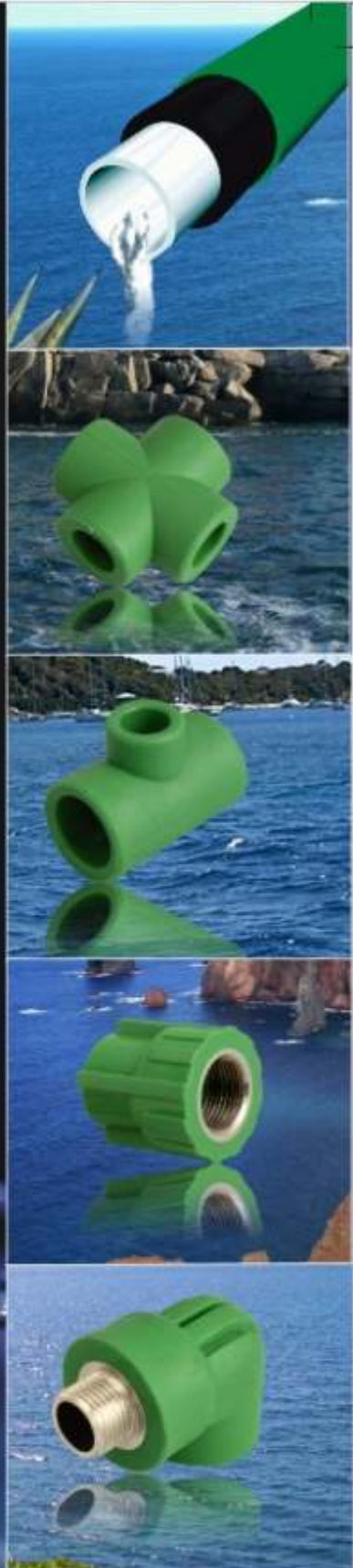


SAVOIR-FAIRE MANUFACTURING CO. PVT. LTD.
An ISO 9001:2000 Certified Co.

IS :15801



1st
Time with
3Layer
Technology

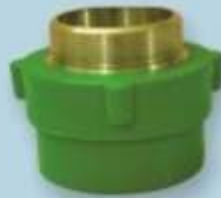




IS :15801



CM/L 3064445



Company Profile

The quest for excellence is the underlying principle behind the success of the Savoir-Faire Manufacturing Co.Pvt.Ltd. SFMC has become a name to reckon with in the area of manufacturing high quality PP-R Pipes and Fittings for the first time in India that complement international standards. SFMC has the rare distinction as the pioneer manufacturers of PP-R products to attain the **ISO 9001:2000** certification.

SFMC PP-R products being physically superior, hygienically safe and non-carcinogenic have been approved by the Hygiene Institute of World Germany, CBRI Roorkee (India) and many other recognized international institutes for its superior product quality.

The company makes a judicious mix of engineering quality management and cutting edge technologies to meet the demands of newer designs and utility through enhanced product performance.



The raw material of SFMC pipes and fittings is Polypropylene Random Copolymer (PP-R). This material, due to high quality is the most reliable system to be employed in plumbing and water supply plants. The complete range of products have been further improved with exclusive SFMC accessories, which have been designed to meet all possible needs.

Fields of Application

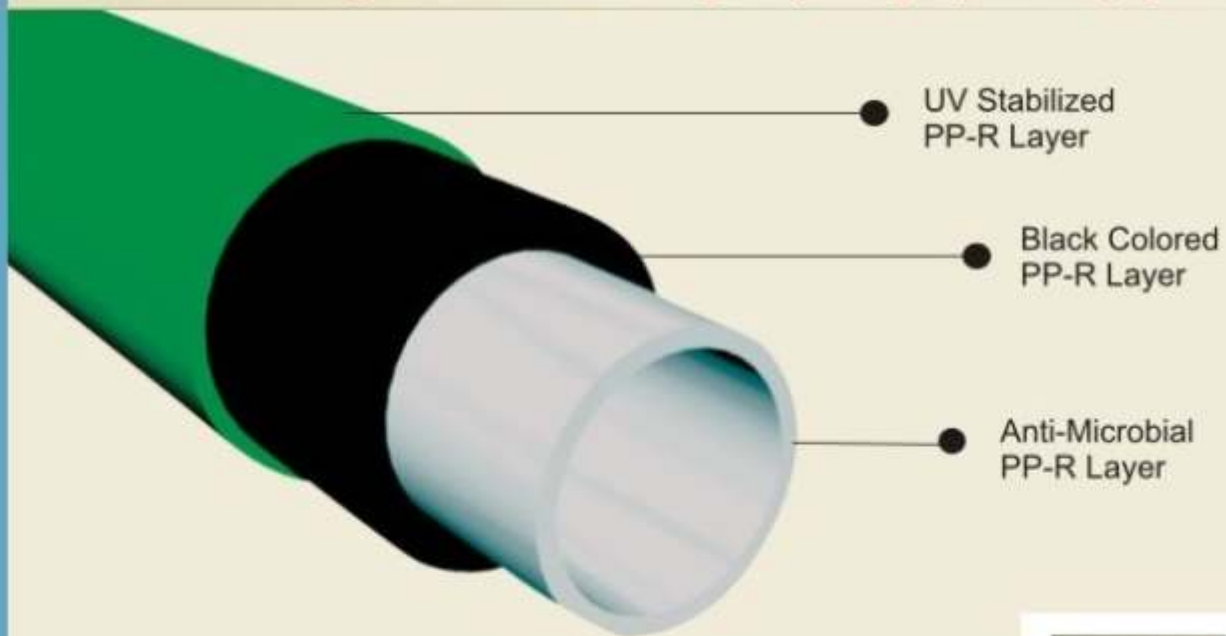
- Potable Water Pipe Network for Cold and Hot Water Installation, i.e., Residential Buildings, Hospitals, Hotels, Office & Schools Buildings, Solar Plants etc.
- Pipe Networks for Rainwater Utilization Systems.
- Pipe Networks for Swimming Pool Facilities.
- Pipe Networks in Agriculture and Horticulture.
- Heating Pipes for Residential Buildings.
- Pipe networks for industry i.e., Transportation of Aggressive Fluids (Acids etc.)
- Transport of Liquid Food due to its Hygienic Behavior.
- Pipe Network for Compressed Air Plants.

Properties

- Extremely long life, 50 years of service life.
- Taste and odour neutral.
- Good Chemical Resistance. Physically neutral.
- No need for insulation for concealed piping networks.
- Resistance to High Temperature (95°C).
- Convenient & Reliable Installation.
- No Reaction with Salts & Acids.
- No Calcification.
- Leak Proof & Frost Proof.
- Non-Decaying & Non Deforming.
- Low Laying Time & Cost.
- Smooth Inner Surface.
- Sound Insulation.
- Unique and un-rivaled jointing technique with security for Lifetime.
- Recyclable- Prevents Environmental Hazards.

where **Quality**
meets **Lifestyle...**

SFMC adds to its range of products through its indigenous development of multilayer (3 Layer) PP-R pipes.



3 Layer PP-R Pipes

SFMC adds to its range of products through its indigenous Research & Development

UV Stabilized Layer:

Light and Oxygen induce degradation reactants in plastic that may not only harm them visually but also exert a detrimental influence on mechanical and physical properties. Thus the life of plastic product reduces drastically. Moreover, the environmental factors like humidity, temperature and pressure accelerates process.

Thus the stabilization of polymers from UV (Ultra Violet Rays from sun) becomes very important.

Advantages:

1. UV Stabilizers contains various chemical properties, which gives the protection against UV light by various chemical mechanisms.
2. Colors like Black, Green already have good resistance to UV rays, but addition of UV stabilizers further enhance the light and thermal stability of product.
3. UV stabilizers impart long term durability and enhance life of the product.
4. It helps to maintain the properties of polymers.

Anti Microbial PP-R Layer :

Anti-Microbial layer prevents the growth of bacteria/microbes/algae etc. and preserves the pipes from them. This Anti Microbial additive is very low migrating which makes it last for the entire life of product. This Anti Microbial Layer is stable upto 270° C temperature.

Benefits:

1. Anti Microbial Layer is highly food grade.
2. Water storability increases tremendously i.e even for the water lying stagnant in the pipe. It remains hygienic without any bacterial formation for a long period of time.
3. Bad odour can be avoided.



Technical Specifications

Raw Material Polypropylene Random Copolymer

SFMC pipes and fittings are produced from Polypropylene Random copolymer Type 3 as raw material having low melt flow rate, high molecular weight and good flexibility.

This raw material is recommended for the production of pressure pipes including potable water transfer lines, hot and cold water transfer lines, floor heating and also for chemical industry application. Good long term pressure resistance and easy processing and installation technique give cold and hot water systems made of PP-R pipes an advantage as an alternative to the traditional systems.

Polypropylene Random Copolymer Type 3 corresponds to German DIN standards.

- (a) DIN 8077 Pipe Dimensions.
- (b) DIN 8078 Pipes General Quality Requirements and Testing.

As per IS :15801 & DIN 8077:1999-07 Wall Thickness and Mass Corresponding to Different Pipe Sizes

D	SDR 11 / PN 10		SDR 7.4 / PN 16		SDR 6 / PN 20	
	S Thickness in mm	Mass in kg/m	S Thickness in mm	Mass in kg/m	S Thickness in mm	Mass in kg/m
16	-	-	2.2	0.095	2.7	0.110
20	1.9	0.107	2.8	0.148	3.4	0.172
25	2.3	0.164	3.5	0.230	4.2	0.266
32	2.9	0.261	4.4	0.370	5.4	0.434
40	3.7	0.412	5.5	0.575	6.7	0.671
50	4.6	0.638	6.9	0.896	8.3	1.04
63	5.8	1.01	8.6	1.41	10.5	1.65
75	6.8	1.41	10.3	2.01	12.5	2.34
90	8.2	2.03	12.3	2.87	15	3.36
110	10	3.01	15.1	4.3	18.3	5.01
160	14.6	6.38	21.9	9.04	26.6	10.6

As per DIN 8077:1999-07 allowable working pressure for PP-R pipes With SF = 1.5

Temperature in °C	Years of Service	SDR 11/ PN 10	SDR 7.4/ PN 16	SDR 6/ PN 20
10	1	17.6	27.8	35.0
	5	16.6	26.4	33.2
	10	16.1	25.5	32.1
	25	15.6	24.7	31.1
	50	15.2	24.0	30.3
20	100	14.8	23.4	29.5
	1	15.0	23.8	30.0
	5	14.1	22.3	28.1
	10	13.7	21.7	27.3
	25	13.3	21.1	26.5
30	50	12.9	20.4	25.7
	100	12.5	19.8	24.9
	1	12.8	20.2	25.5
	5	12.0	19.0	23.9
	10	11.6	18.3	23.1
40	25	11.2	17.7	22.3
	50	10.9	17.3	21.8
	100	10.6	16.9	21.2
	1	10.8	17.1	21.5
	5	10.1	16.0	20.2
50	10	9.8	15.6	19.6
	25	9.4	15.0	18.8
	50	9.2	14.5	18.3
	100	8.9	14.1	17.8
	1	9.2	14.5	18.3
60	5	8.5	13.5	17.0
	10	8.2	13.1	16.5
	25	8.0	12.6	15.9
	50	7.7	12.2	15.4
	100	7.4	11.8	14.9
70	1	7.7	12.2	15.4
	5	7.2	11.4	14.3
	10	6.9	11.0	13.8
	25	6.7	10.5	13.3
	50	6.4	10.1	12.7
80	1	6.5	10.3	13.0
	5	6.0	9.5	11.9
	10	5.9	9.3	11.7
	25	5.1	8.0	10.1
	50	4.3	6.7	8.5
95	1	5.5	8.6	10.9
	5	4.8	7.6	9.6
	10	4.0	6.3	8.0
100	25	3.2	5.1	6.4
	1	3.9	6.1	7.7
	5	2.5	4.0	5.0
10	2.1	3.4	4.2	

Thermal Properties

Properties	Test Method	Unit	Value
Thermal conductivity at 23°C	DIN 52612	W/m ² K	0.23
Specific heat at 23°C	C	Kj/kg ^o K	1.73
Coefficient of linear thermal expansion	DIN 53 752	K ⁻¹	1.5 x10 ⁻⁴
Under weight deformation temperature 1.8 N/mm ²	ASTM D 648 ISO 75	°C	44
0.45 N/mm ²	DIN 53 461	°C	42
VICAT softening point	ASTM D 1525 ISO 306 DIN 53 460	°C	130

Physical Properties

Properties	Test Method	Unit	Value
Density	ASTM D792	g/cm ³	0.91
Melt Flow Index:			
MFI 190°C/5 Kg	ASTM D1238	g/10 minutes	0.4
MFI 230°C/2.16 Kg	ISO R 1133	g/10 minutes	0.2
MFI 230°C/5 Kg	DIN 53 735	g/10 minutes	0.6

Pipe (PN 10) (3-layer)



PRODUCT ID	SIZE	UNIT
10253	25 MM	Meter
10323	32 MM	Meter
10403	40 MM	Meter
10503	50 MM	Meter
10633	63 MM	Meter
10753	75 MM	Meter
10903	90 MM	Meter
101103	110 MM	Meter
101603	160 MM	Meter

Pipe (PN 10) (Mono Layer)



PRODUCT ID	SIZE	UNIT
10251	25 MM	Meter
10321	32 MM	Meter
10401	40 MM	Meter
10501	50 MM	Meter
10631	63 MM	Meter
10751	75 MM	Meter
10901	90 MM	Meter
101101	110 MM	Meter
101601	160 MM	Meter

Pipe (PN 16) (3-layer)



PRODUCT ID	SIZE	UNIT
16163	16 MM	Meter
16203	20 MM	Meter
16253	25 MM	Meter
16323	32 MM	Meter
16403	40 MM	Meter
16503	50 MM	Meter
16633	63 MM	Meter
16753	75 MM	Meter
16903	90 MM	Meter
161103	110 MM	Meter
161603	160 MM	Meter

Pipe (PN 16) (Mono Layer)



PRODUCT ID	SIZE	UNIT
16161	16 MM	Meter
16201	20 MM	Meter
16251	25 MM	Meter
16321	32 MM	Meter
16401	40 MM	Meter
16501	50 MM	Meter
16631	63 MM	Meter
16751	75 MM	Meter
16901	90 MM	Meter
161101	110 MM	Meter
161601	160 MM	Meter

Pipe (PN 20) (3-layer)



PRODUCT ID	SIZE	UNIT
20163	16 MM	Meter
20203	20 MM	Meter
20253	25 MM	Meter
20323	32 MM	Meter
20403	40 MM	Meter
20503	50 MM	Meter
20633	63 MM	Meter
20753	75 MM	Meter
20903	90 MM	Meter
201103	110 MM	Meter
201603	160 MM	Meter

Pipe (PN 20) (Mono Layer)



PRODUCT ID	SIZE	UNIT
20161	16 MM	Meter
20201	20 MM	Meter
20251	25 MM	Meter
20321	32 MM	Meter
20401	40 MM	Meter
20501	50 MM	Meter
20631	63 MM	Meter
20751	75 MM	Meter
20901	90 MM	Meter
201101	110 MM	Meter
201601	160 MM	Meter

Socket



PRODUCT ID	SIZE	UNIT
101600	16 MM	Piece
102000	20 MM	Piece
102500	25 MM	Piece
103200	32 MM	Piece
104000	40 MM	Piece
105000	50 MM	Piece
106300	63 MM	Piece
107500	75 MM	Piece
109000	90 MM	Piece
1011000	110 MM	Piece
1016000	160 MM	Piece

Elbow 45°



PRODUCT ID	SIZE	UNIT
121600	16 MM	Piece
122000	20 MM	Piece
122500	25 MM	Piece
123200	32 MM	Piece
124000	40 MM	Piece
125000	50 MM	Piece
126300	63 MM	Piece

IS :15801



CML 3064445



Reduction


PRODUCT ID	SIZE	UNIT
112016	20-16	Piece
112516	25-16	Piece
112520	25-20	Piece
114220	32-20	Piece
114225	32-25	Piece
114020	40-20	Piece
114025	40-25	Piece
114032	40-32	Piece
115020	50-20	Piece
115025	50-25	Piece
115032	50-32	Piece
115040	50-40	Piece
116340	63-40	Piece
116350	63-50	Piece
117540	75-40	Piece
117563	75-63	Piece
119050	90-50	Piece
119063	90-63	Piece
119075	90-75	Piece
1111075	110-75	Piece
1111090	110-90	Piece
11160110	160-110	Piece

Elbow 90°


PRODUCT ID	SIZE	UNIT
131600	16 MM	Piece
132000	20 MM	Piece
132500	25 MM	Piece
133200	32 MM	Piece
134000	40 MM	Piece
135000	50 MM	Piece
136300	63 MM	Piece
137500	75 MM	Piece
139000	90 MM	Piece
1311000	110 MM	Piece
1316000	160 MM	Piece

Reducing Elbow


PRODUCT ID	SIZE	UNIT
142016	20-16	Piece
142520	25-20	Piece
143220	32-20	Piece
143225	32-25	Piece
144032	40-32	Piece
145040	50-40	Piece

Cross Tee


PRODUCT ID	SIZE	UNIT
161600	16 MM	Piece
162000	20 MM	Piece
162500	25 MM	Piece
163200	32 MM	Piece
164000	40 MM	Piece
165000	50 MM	Piece

End Cap


PRODUCT ID	SIZE	UNIT
181600	16 MM	Piece
182000	20 MM	Piece
182500	25 MM	Piece
183200	32 MM	Piece
184000	40 MM	Piece
185000	50 MM	Piece
186300	63 MM	Piece
187500	75 MM	Piece
189000	90 MM	Piece
1811000	110 MM	Piece
1816000	160 MM	Piece

Tee


PRODUCT ID	SIZE	UNIT
151600	16 MM	Piece
152000	20 MM	Piece
152500	25 MM	Piece
153200	32 MM	Piece
154000	40 MM	Piece
155000	50 MM	Piece
156300	63 MM	Piece
157500	75 MM	Piece
159000	90 MM	Piece
1511000	110 MM	Piece
1516000	160 MM	Piece

Reduction-T


PRODUCT ID	SIZE	UNIT
172017	20-16-20	Piece
172517	25-16-25	Piece
172520	25-20-25	Piece
173220	32-20-32	Piece
173225	32-25-32	Piece
174020	40-20-40	Piece
174025	40-25-40	Piece
174032	40-32-40	Piece
175020	50-20-50	Piece
175025	50-25-50	Piece
175032	50-32-50	Piece
175040	50-40-50	Piece
176325	63-25-63	Piece
176332	63-32-63	Piece
176340	63-40-63	Piece
176350	63-50-63	Piece
177540	75-40-75	Piece
177550	75-50-75	Piece
177563	75-63-75	Piece
179050	90-50-90	Piece
179063	90-63-90	Piece
179075	90-75-90	Piece
1711050	110-50-110	Piece
1711063	110-63-110	Piece
1711075	110-75-110	Piece
1711090	110-90-110	Piece
17160110	160-110-160	Piece

Crossover



PRODUCT ID	SIZE	UNIT
192000	20 MM	Piece
192500	25 MM	Piece
193200	32 MM	Piece

Female Threaded Socket



PRODUCT ID	SIZE	UNIT
201612	16 1/2"	Piece
202012	20 1/2"	Piece
202034	20 3/4"	Piece
202512	25 1/2"	Piece
202534	25 3/4"	Piece
20251	25 1"	Piece
203212	32 1/2"	Piece
203234	32 3/4"	Piece
2032 1	32 1"	Piece
2032114	32 1 1/4"	Piece
2040114	40 1 1/4"	Piece
2040112	40 1 1/2"	Piece
2050112	50 1 1/2"	Piece
20502	50 2"	Piece
20632	63 2"	Piece
2075212	75 2 1/2"	Piece
20903	90 X 3"	Piece

Female Threaded Elbow



PRODUCT ID	SIZE	UNIT
221612	16 1/2"	Piece
222012	20 1/2"	Piece
222034	20 3/4"	Piece
222512	25 1/2"	Piece
222534	25 3/4"	Piece
2225 01	25 1"	Piece
224222	32 1/2"	Piece
224234	32 3/4"	Piece
2242 01	32 1"	Piece
2242214	32 1 1/4"	Piece
2240114	40 1 1/4"	Piece
2450112	50 1 1/2"	Piece

Male Threaded Elbow



PRODUCT ID	SIZE	UNIT
231612	16 1/2"	Piece
232012	20 1/2"	Piece
232034	20 3/4"	Piece
232512	25 1/2"	Piece
232534	25 3/4"	Piece
232501	25 1"	Piece
233212	32 1/2"	Piece
233234	32 3/4"	Piece
233201	32 1"	Piece
2332114	32 1 1/4"	Piece
2340114	40 1 1/4"	Piece
2350112	50 1 1/2"	Piece

Gate Valve



PRODUCT ID	SIZE	UNIT
262000	20 MM	Piece
262600	25 MM	Piece
263200	32 MM	Piece
264000	40 MM	Piece
265000	50 MM	Piece
266300	63 MM	Piece

Male Threaded Socket



PRODUCT ID	SIZE	UNIT
211612	16 1/2"	Piece
212012	20 1/2"	Piece
212034	20 3/4"	Piece
212512	25 1/2"	Piece
212534	25 3/4"	Piece
2125 01	25 1"	Piece
213212	32 1/2"	Piece
213234	32 3/4"	Piece
2132 1	32 1"	Piece
2132114	32 1 1/4"	Piece
2140114	40 1 1/4"	Piece
2140112	40 1 1/2"	Piece
2150112	50 1 1/2"	Piece
215002	50 2"	Piece
216302	63 2"	Piece
2175112	75 2 1/2"	Piece
21903	90-3	Piece

Female Threaded Tee



PRODUCT ID	SIZE	UNIT
241612	16 1/2"	Piece
242012	20 1/2"	Piece
242034	20 3/4"	Piece
242512	25 1/2"	Piece
242534	25 3/4"	Piece
2425 01	25 1"	Piece
243212	32 1/2"	Piece
2432 1/3	32 3/4"	Piece
2432 01	32 1"	Piece
2432114	32 1 1/4"	Piece
2440114	40 1 1/4"	Piece
2450112	50 1 1/2"	Piece

Male Threaded Tee



PRODUCT ID	SIZE	UNIT
251612	16 1/2"	Piece
252012	20 1/2"	Piece
252034	20 3/4"	Piece
252512	25 1/2"	Piece
252534	25 3/4"	Piece
2525 01	25 1"	Piece
253212	32 1/2"	Piece
253234	32 3/4"	Piece
2532 01	32 1"	Piece
2532114	32 1 1/4"	Piece
2540114	40 1 1/4"	Piece
2550112	50 1 1/2"	Piece

IS :15801



CML 3064445



Ball Valve (Heavy Weight Brass)


PRODUCT ID	SIZE	UNIT
272000	20 MM	Piece
272500	25 MM	Piece
273200	32 MM	Piece
274000	40 MM	Piece

Ball Valve (Plastic Body)


PRODUCT ID	SIZE	UNIT
292000	20 MM	Piece
292500	25 MM	Piece
293200	32 MM	Piece
294000	40 MM	Piece
295000	50 MM	Piece
296300	63 MM	Piece
297500	75 MM	Piece
299000	90 MM	Piece

Brass Union (Both End PPR Pipe)


PRODUCT ID	SIZE	UNIT
312000	20 MM	Piece
312500	25 MM	Piece
313200	32 MM	Piece

Ring HDPE / PP


PRODUCT ID	SIZE	UNIT
443200	32 MM	Piece
444000	40 MM	Piece
445000	50 MM	Piece
446300	63 MM	Piece
447500	75 MM	Piece
449000	90 MM	Piece
4411000	110 MM	Piece
4416000	160 MM	Piece

Flange Socket


PRODUCT ID	SIZE	UNIT
343200	32 MM	Piece
344000	40 MM	Piece
345000	50 MM	Piece
346300	63 MM	Piece
347500	75 MM	Piece
349000	90 MM	Piece
3411000	110 MM	Piece
3416000	160 MM	Piece

Concealed Stop Cock


PRODUCT ID	SIZE	UNIT
362000	20 MM	Piece
362500	25 MM	Piece

Ball Valve (Light Weight Brass)


PRODUCT ID	SIZE	UNIT
282000	20 MM	Piece
282500	25 MM	Piece
283200	32 MM	Piece
284000	40 MM	Piece

Wall Clamp


PRODUCT ID	SIZE	UNIT
331600	16 MM	Piece
332000	20 MM	Piece
332500	25 MM	Piece
333200	32 MM	Piece
334000	40 MM	Piece
335000	50 MM	Piece

Union


PRODUCT ID	SIZE	UNIT
302000	20 MM	Piece
302500	25 MM	Piece
303200	32 MM	Piece
304000	40 MM	Piece
305000	50 MM	Piece
306300	63 MM	Piece

Long Plug With O-ring


PRODUCT ID	SIZE	UNIT
3212	1/2"	Piece

Plug Short


PRODUCT ID	SIZE	UNIT
3512	1/2"	Piece
3534	3/4"	Piece

Double Union Ball Cock


PRODUCT ID	SIZE	UNIT
44362000	20 MM	Piece
442500	25 MM	Piece
443200	32 MM	Piece
444000	40 MM	Piece
445000	50 MM	Piece
446300	63 MM	Piece

Welding Suitcase (16-40), (50-75), (90-110), 160)


PRODUCT ID	SIZE	UNIT
391640	16-40	Piece
395075	50-75	Piece
3990110	90-110	Piece
39160	160	Piece

Single Welding Machine


PRODUCT ID	SIZE	UNIT
431640	16-40	Piece
435075	50-75	Piece
4390110	90-110	Piece
43160	160	Piece

Brass Tank Connector (One Side Thread)



PRODUCT ID	SIZE	UNIT
3734	¾"	Piece
3701	1"	Piece
37114	1¼"	Piece
37112	1½"	Piece

Brass Tank Connector (Both Side Thread)



PRODUCT ID	SIZE	UNIT
380 2	2"	Piece
3812	½"	Piece
38434	¾"	Piece
380 1	1"	Piece
38 114	1¼"	Piece
38 112	1½"	Piece
38 02	2"	Piece

PPR Tank Connector



PRODUCT ID	SIZE	UNIT
4212	½"	Piece
4234	¾"	Piece
4201	1"	Piece
4202	2"	Piece
42114	1¼"	Piece
42112	1½"	Piece

Pipe Scissor



PRODUCT ID	SIZE	UNIT
4000	16-32	Piece

Welding Tool



PRODUCT ID	SIZE	UNIT
411600	16 MM	Piece
412000	20 MM	Piece
412500	25 MM	Piece
413200	32 MM	Piece
414000	40 MM	Piece
415000	50 MM	Piece
416300	63 MM	Piece
417500	75 MM	Piece
419000	90 MM	Piece
4111000	110 MM	Piece
4116000	160 MM	Piece

Preparing the Welding Machine:

- Fit the welding Machine with the dies of required pipe and fittings diameter to be processed and connect with plug to the 230V power supply socket. Wait until thermostat light on the machine goes off, indicating that welding machine has reached the working temperature (260° C).
- Cut the pipe at right angles to axis. In order to avoid the errors in defining the distances and direction of the fittings, one may use a pencil for markings.(Fig. 1)
- Push the end of the pipe and simultaneously the fitting without turning them up to the marked welding depth into the tools (Fig. 2). It is important to observe the heating times of assembly parts.
- After stipulated heating time, quickly remove pipe & fitting from the welding dies. Join them immediately and without turning, until the marked welding depth of pipe is covered by the PP-R fitting.(Fig. 3)
- After heating the joining parts don't push them vigorously. At the stage of joining, it is possible to effect the rotation of maximum 10° to 15° in order to perform coaxial correction.



Fig.1
Cut required length with cutter



Fig. 2
Heat Pipe and fitting at same time



Fig. 3
Take out the two & Fuse them together

IS :15801



CML 3064445





National Test House



Bureau of Indian Standards


 Central Institute of Plastics
Engineering & Technol

 Department of Microbiology,
Chennai-2


Bharat Test House



Delhi Test House


 Central Institute of Plastics
Engineering & Technology


CBRI


 Shriram Institute for Industrial
Research


Santized AG

Members of Organisations of International Repute

- Indian Plumbing Association
- World Plumbing Council

Government Organisations Patronising SFMC Products

- CPWD
- MES
- PWD
- Delhi Jal Board
- Municipal Corporation of Mumbai
- MP Housing Board
- India Railway Welfare Organisation
- Haryana Police Housing
- Northern Railways
- Uttarakhand Jal Sansthan
- Aligarh Muslim University
- U.P. Avas Vikas
- U.P. RNN
- AWHO
- Royal Govt. of Bhutan

Clientele



MILITARY ENGINEER SERVICES



INDO RAMA

Indo Rama Synthetics (India) Limited



IS : 15801



CML 3064445





SAVOIR-FAIRE MANUFACTURING CO. Pvt. Ltd.

Office Address

C-195, Pushpanjali Enclave
Pitampura, Delhi-34 (INDIA)
Tel.: +91-93122 72766 91-11-27013092 / 27017993
Fax: +91-11-27025487

Works

Plot No.29, Sector -3A
Integrated Indl. Estate
BHEL, Haridwar, Uttarakhand (INDIA)
Fax: +91-5334-239384

IS :15801



Website: <http://www.sfmc-india.com>
E-mails: enquiry@sfmc-india.com
info@sfmc-india.com
manglam@nda.vsnl.net.in